

Schloss Rosenberg

7. September 2016

SCHEMA ASSESSMENT SCHEMA THERAPY THEORY-OF-MIND

In Personality Disorders and Relationship Maltreatment

Fortbildungsveranstaltung

der sozialpsychiatrischen Abteilung des Landeskrankums Waidhofen/Thaya

PROGRAMM:

VORTRÄGE | 13.00 – 14.30 Uhr

13.00 – 13.45	„Theory of Mind and Schemas in Borderline Personality Disorder and the treatment effects of Schema Therapy“ Arnoud Arntz
13.45 – 14.30	„Relationship Maltreatment and Personality Disorders“ Jill Lobbestael
14.30 – 15.00	PAUSE

WORKSHOPS | 15.00 – 17.00 Uhr

„Schema Mode Assessment with the Schema Mode Inventory“ Jill Lobbestael
„Schematherapy in the field“ Arnoud Arntz

Diese Veranstaltung ist Teil der Fortbildungskooperation des Waldviertler Zentrums für Seelische Gesundheit des Landeskrankums Waidhofen an der Thaya und der PSZW-GmbH, Kliniken Eggenburg – Gars am Kamp

Über die Vortragenden:

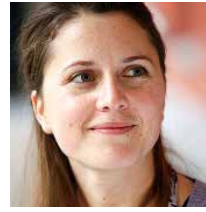


PROF. DR. ARNOUD ARNTZ
*Professor, Clinical Psychology
Faculty of Social and
Behavioural Sciences
University of Amsterdam*

Arnaud Arntz is professor of Clinical Psychology at the University of Amsterdam, the Netherlands. His main research interests lie in the fields of anxiety and personality disorders, both applied and fundamental. He also practices as a psychotherapist at De Viersprong Institute in Amsterdam, where he treats patients with personality disorders.

His research focuses on psychological processes underlying personality disorders (PDs), especially borderline personality disorder (BPD), and anxiety disorders, especially PTSD; and their treatment. Using the approach of experimental psychopathology he tested psychological theories of anxiety disorders and PDs and contributed to the development of their psychological treatment. In developing and testing psychological theories and treatments he aims to connect basic research and clinical work. He is perhaps best known for his contributions to the development of Schema Therapy and Imagery Rescripting. Professor Arntz feels that clinical work is essential to connect the areas of basic research with clinical applications.

<http://www.uva.nl/en/about-the-uva/organisation/staff-members/content/a/rla.r.arntz/a.r.arntz.html>



ASST. PROF. DR. JILL LOBBESTAEEL
*Assistant Professor, Head of the
Clinical Psychology Section
Faculty of Psychology and
Neuroscience
Maastricht University*

JILL LOBBESTAEEL studied Mental Health, (1998-2002) and received her PhD in 2008 at Maastricht University on cognitive beliefs and childhood trauma in borderline and antisocial personality disorders. The same year, she was appointed assistant professor. In 2009, she was a visiting research fellow at the Psychology department at Harvard University (Boston, USA). She was awarded with a postdoc fellowship of the Niels Stensen foundation that allowed her to work at the Department of Social Psychology at Florida State University (Tallahassee, USA) from 2010 till 2011.

Lobbestael now heads the section of the Clinical Psychology section and the scientific track of the post-doctoral Clinical Psychology track at Rino Zuid. She also works as a therapist in the Personality Disorder team at Riagg Maastricht. Her expertise is in personality disorders (borderline, antisocial, and narcissism), emotional reactivity, predictors of aggressive behavior, childhood precursors, schema modes and discrepancy in assessment levels.

<https://www.maastrichtuniversity.nl/jill.lobbestael>



Foto: R. Podolsky | mediadesign.at

Veranstaltungsort:

Renaissanceschloss Rosenberg
Rosenburg 1
3573 Rosenberg
Österreich

www.rosenburg.at

Anmeldung:
www.pszw.at/klinik-eggenburg/aktuelles-und-veranstaltungen

Kontakt:
02984/20228

